

Item
15-220

Subscriber & Base Station Antennas

5.1 – 5.8GHz Dish Dual Polarized Broadband Antenna

Features

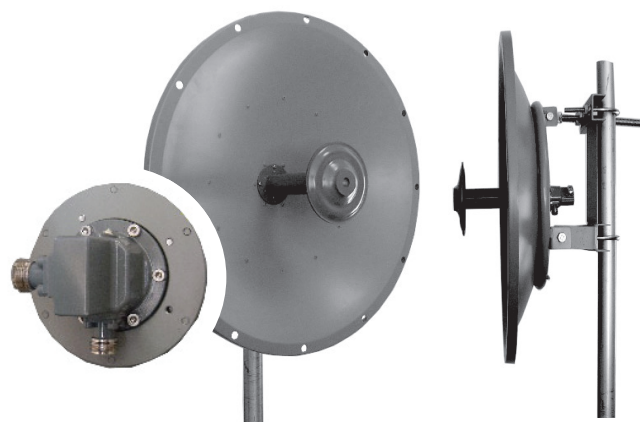
- Wide Band Operation
- Vertically or Horizontally Polarized
- Extremely Rugged for Extreme Environments

Electrical Specifications

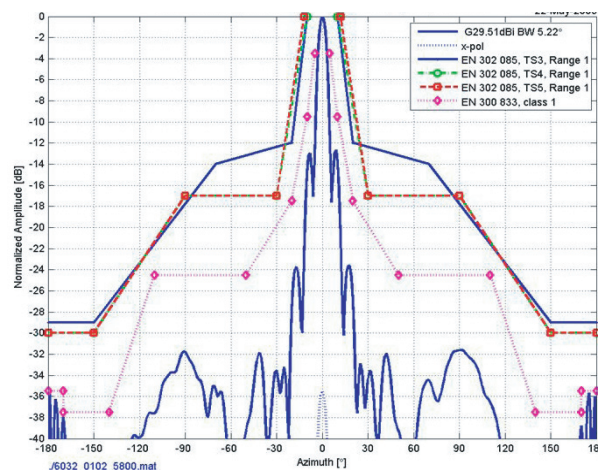
Frequency	5150 - 5850 MHz
Gain	32 dBi
Beamwidth	4°
VSWR	1.8:1
Impedance	50 Ohms
Input Power	100 W
Mechanical Downtilt	30°
Sidelobes	-32 dB
Front to Back Ratio	-38 dB
Cross Pole	-34 dB

Mechanical Specifications

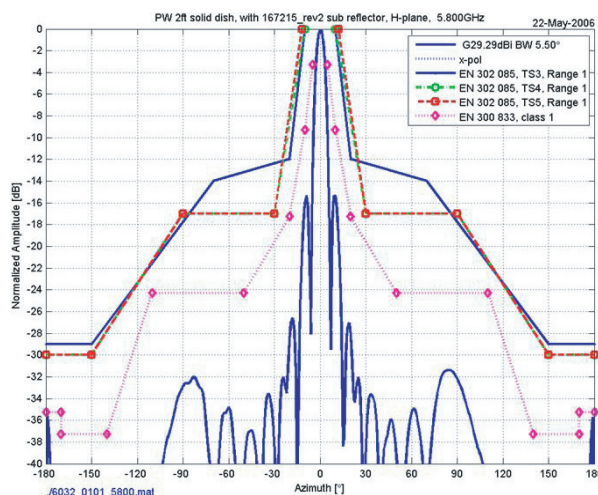
Size/Diameter	36.5"
Weight, incl. bracket	22 lb (10kg)
Wind Loading	125 Mph (201.17 Kmh)
Operating Temperature	-40°C to 70°C
Mounting Kit/Style	included: Pole Mount
Additional Features	Broadband Antenna



5.8GHz E-Plane



5.8GHz H-Plane



TELETRONICS
INTERNATIONAL INC.

Teletronics International, Inc.
2 Choke Cherry Road
Rockville, MD 20850

Tel: 301.309.8500
Fax: 301.309.8851
www.teletronics.com